

THE ESTONIAN MOBILE LIBRARY

SERVICE IN TALLINN

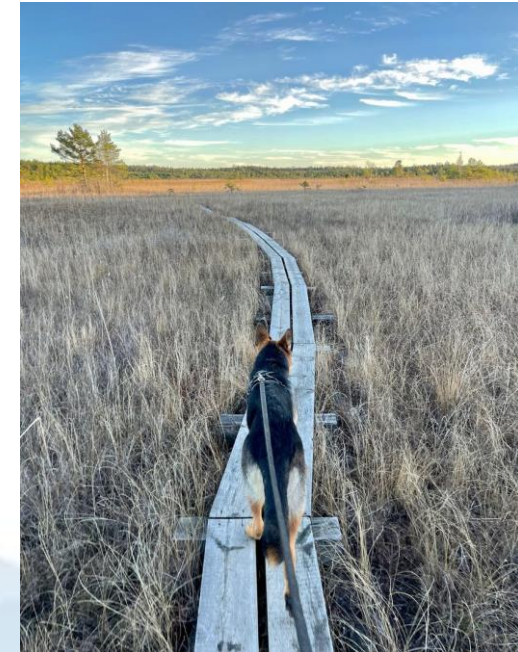


Annika Marsh, Chief Librarian

- **University of Tartu Viljandi Culture Academy**
(B.A, Library and Information Science)
- **Tallinn Central Library, 15 years**
(Manager of the Mobile Library, 13.5 years)

Recognition:

- **The Annual Colleague Award, 2022**
- **TCL Best Children's Service, 2018**
- **Tallinn's Best Library Award, 2017**
- **The Special Award from ANDRAS, 2017**





Tallinn Central Library

2 Departments
(Estonian Literature, Foreign Literature)

17 Branch Libraries

1 Mobile Library

1 Library Bicycle

TCL Home Lending

- E-catalogue ESTER/ Sierra Library System



- Books and audiobooks, DVDs and CDs
- Magazines and newspapers
- E-readers for e-books
- Boardgames and card games

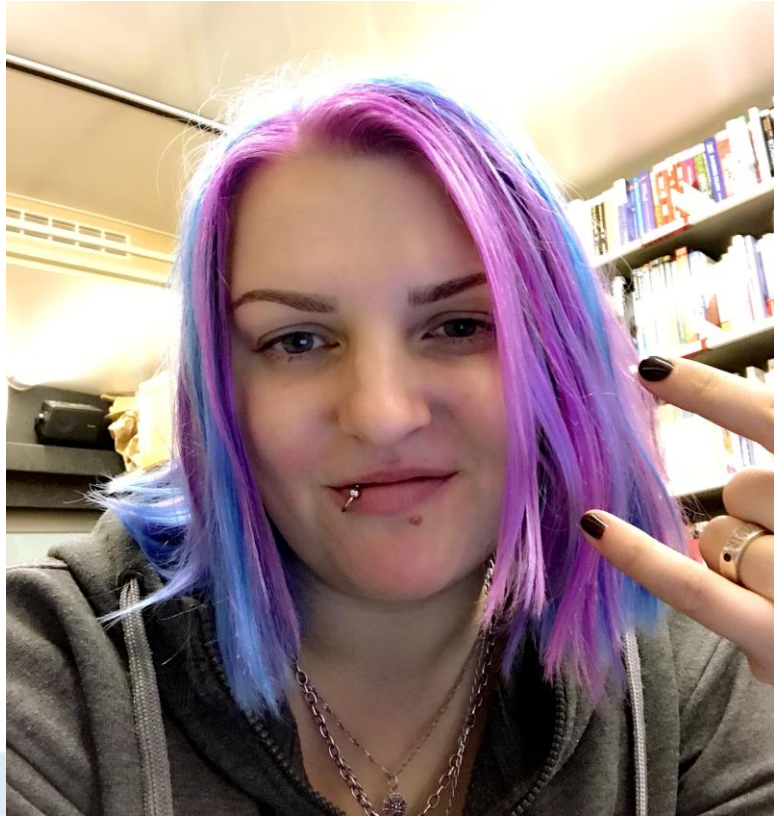


TCL Home Lending

- Music Box (Main Library)
- Seed Box (Laagna Branch)
- Tool Box (Pelguranna Branch)
- Sporting Equipment (various)
- Museum Tickets (Kalamaja, Kadrioru Branch)
- Innovation Lab (Kännukuke Branch)
- Sewing Room (Sõle Branch)
- E-libraries (ELLU, Overdrive, Naxos)



ANNIKA



Chief Specialist

Mon, Tue, Thurs	11.30 AM – 7.30 PM
Wed	11 AM – 7 PM
Fri	9 AM – 5 PM

MEELIS



Bus Driver/Assistant

Mon - Thurs	12 PM – 8 PM
Fri	9 AM – 5 PM

MART





Kangru 13

RAAMATUKOGU

MUUDAME ELU RIKKAMAKS
www.keskraamatukogu.ee

772 BAS

- Over 15 years - May 13, 2008
- 4 administrative districts in Tallinn
- Monday – Thursday
- 26 stops in 4 days
- 30 minutes per stop
- Open to the public 13 hours a week
- Fridays – Educational Programs at Schools or Kindergartens
- Special events on the weekends



RRAAMATU-
KOGU-
BUSSTallinnas sõidab ringi raamatukogubuss nimega
Raamatukogubuss teenindab lugejaid Lasnamäel,**Katarina Jee**
Haaberstis, Nõmmel ja Pirital.

ESMASPÄEV – LASNAMÄE MARSRUUT

13.30-14.00	Mõigu	Kaabli 6
14.15-14.45	Majaka	Peterburi tee 14a
14.55-15.25	Pae	Pae 43
15.45-16.15	Mahtra	Mahtra 9
17.00-17.30	Ümera	Ümera 13a
17.45-18.15	Priisle	Linnamäe tee 37a
18.30-19.00	Katleri	Martsa 2a

TEISIPÄEV – HAABERSTI MARSRUUT

13.15-13.45	Kolde	Kolde pst 42
14.10-14.40	Astangu	Astangu 22
15.05-15.30	Pikaliiva	Hargi 2
16.25-16.50	Tiskre	Taludevahe 116
17.05-17.30	Lesta	Lesta 1a
17.55-18.20	Piibelehe	Piibelehe 3
18.30-19.00	Humala	Mureli 5

KOLMAPÄEV – NÕMME MARSRUUT

13.40-14.10	Raudalu	Viljandi mnt 36 b1
14.25-15.00	Nurme	Nurme 40
15.10-15.40	Jannseni	J. V. Jannseni 35
16.30-17.00	Pääsküla	Pärnu mnt 453e
17.15-17.45	Laagri	Paplite pst 1
18.00-18.30	Lauliku	Lauliku 4b

NELJAPÄEV – PIRITA MARSRUUT

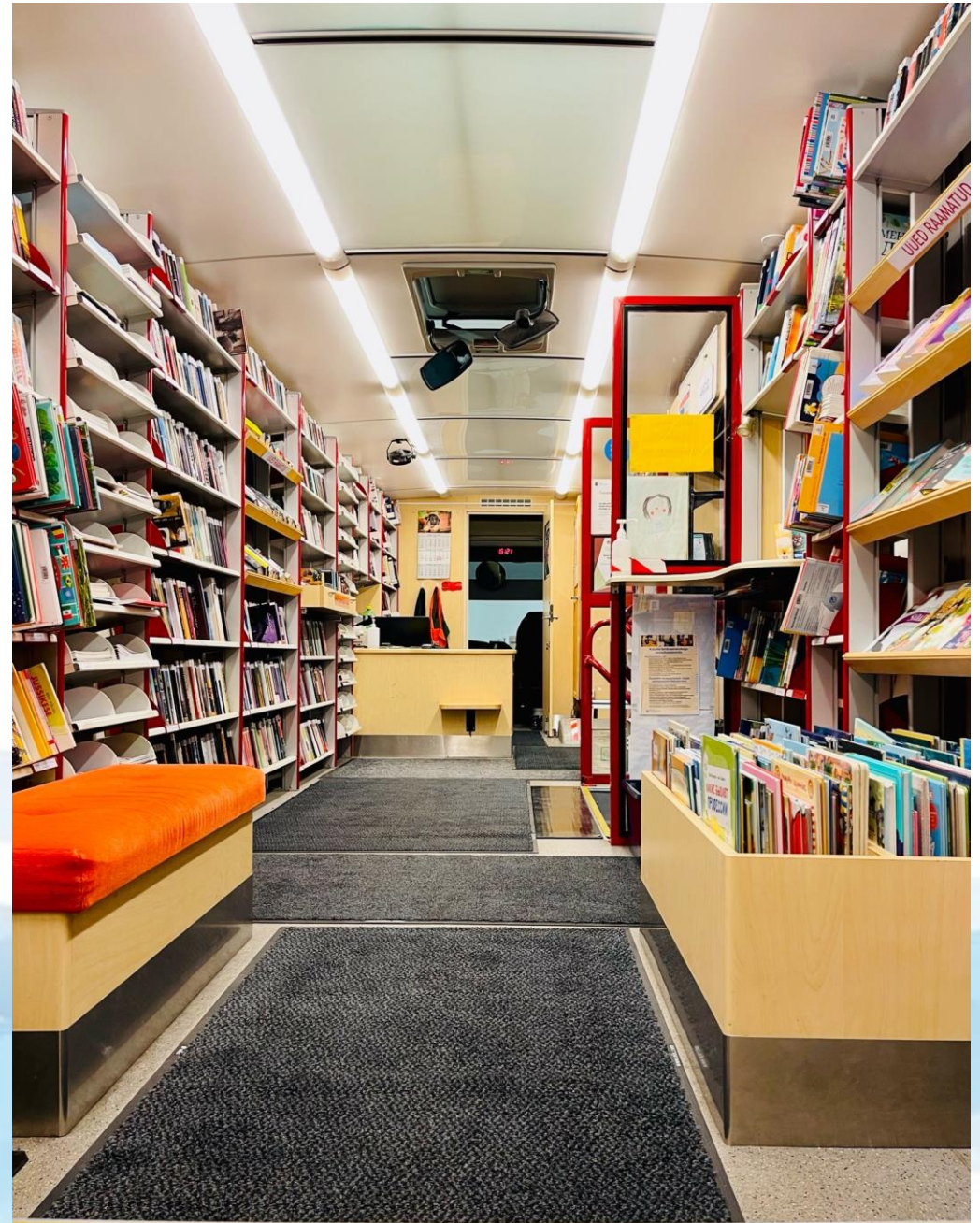
13.40-14.10	Teletorn	Kloostrimetsa tee 56
14.25-15.00	Maarjamäe	Urva 5
15.10-15.45	Vabaõhukooli	Vabaõhukooli tee 62
16.55-17.25	Mähe	Padriku tee 10
17.45-18.15	Merivälja	Haaviku tee 16
18.25-19.00	Väina	Väina tee 11

NB! Buss peatub tabelis toodud aadresside lähedusesTallinna
Keskraamatukogu



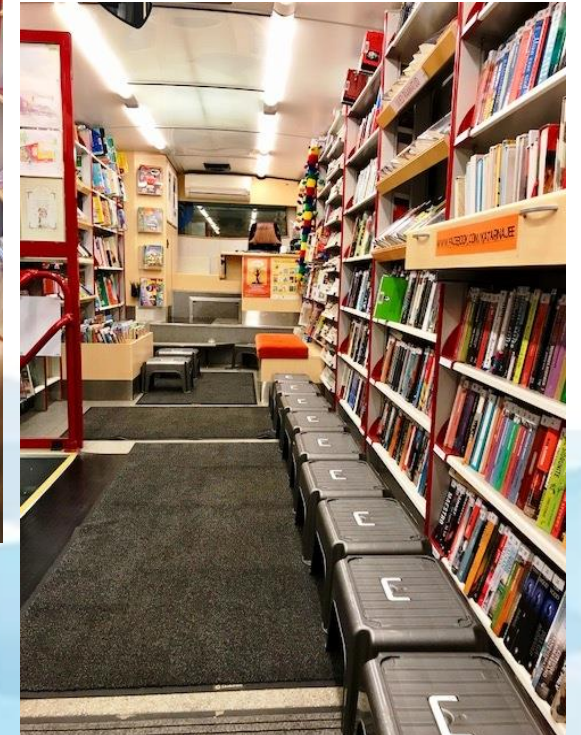
Bus' Collection

- 4,000 books on board
- Collection updated regularly
- Book ordering from Pelguranna Branch
- Books for adults, youth and children in Estonian, Russian and English, also Ukraine
- Magazines for adults and children in Estonian and Russian
- Audiobooks for adults and children in Estonian
- E-reader for e-books



Educational Programs

- Only on Fridays
- Schools, Kindergartens and Childcare Centres
- 25 minutes for one group
- 4 groups, 25 kids in a group



Events

- Only on Fridays or on weekends
- Participating in citywide events - community events, festivals etc
- Pop-up Library Bus in different locations
- Joint events with other Branch Libraries
- Visiting adult care homes
- Visiting people with special needs

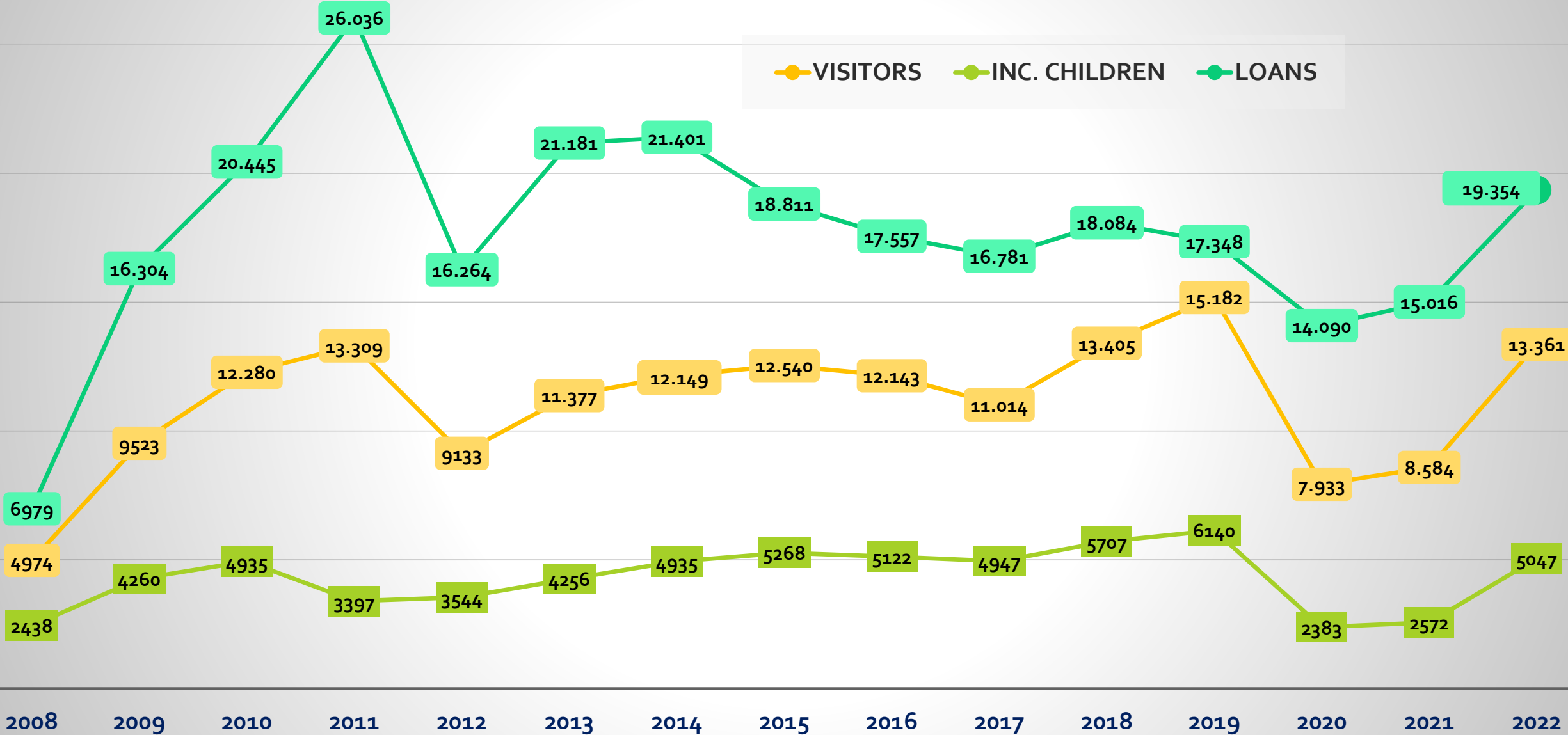


Events

- Tallinn Maritime Days (3,000 visits)
- Tallinn Old Town Days (2,000 visits)
- Literary Street Festival (1,500)
- Tallinn Zoo Birthday Celebrations (1,000)
- June 1st, National Children's Day (1,000)
- Youth Song and Dance Festival (1,500)
- Maarjamäe Community Fair (300)
- Food Truck Festival (1,500)



● VISITORS ● INC. CHILDREN ● LOANS





THE FUTURE!

- Planned to be completed in 2024
- 1,000,000 euros
- public procurement



- Contest for the bus' name
- 2 teams / 2 shifts?
- More stops?

VERY SPECIAL VISITORS



JÄRVA MUNICIPALITY LIBRARY BUS „KRÕÕT“

- since 2021 (July 1st)
- 1,000 books
- 50 stops



- 145 patrons
- 4,500 visits
- 2,000 loans

Thank You!

Questions? Comments? Contact Me



Annika.Marsh@tln.lib.ee



+372 5303 7737



[linkedin.com/in/annikamarsh/](https://www.linkedin.com/in/annikamarsh/)



[facebook.com/KatarinaJee](https://www.facebook.com/KatarinaJee)